

Dear IMEA District 7 Jazz Directors,

We hope this finds you well as the school year comes to an end. All required audition music for the 2018 ILMEA junior Jazz Festival is included in this packet. Auditions are on **Saturday, September 22, 2018** at **Round Lake High School (800 N. High School Drive, Round Lake, IL)**. The Jr.



Concert Band auditions will be held at the same location. The Jazz Festival will take place on **Saturday, November 17, 2018** at **Waukegan High School (2325 Brookside Ave, Waukegan, IL 60085)**. Below is a description of the audition requirements for all instruments. If you have any questions regarding the music feel free to contact me. **Please note that VIBES should be listed as a separate audition not dependent on drum set.**

NEW THIS YEAR: We will not be using the “Tootsie” melody nor the Jim Snidero Easy Jazz Conception etude. In lieu of this, we will use the Real Easy Book melody of “Sonnymoon for Two.”

1) Real Easy Book - 3-horn edition “Sonnymoon for Two”

(see chart for what each student will play for each chorus during their audition)

	Brass/Reeds	Drums	Guitar, Vibes, Piano	Bass
First Chorus	Melody	Time	Melody	Melody
Second Chorus	Improvise	Trade 4s with recording	Comp	Walk Bass Line
Third Chorus			Improvise	Improvise

2) Excerpts from the selected pieces for the Jazz Festival

(links to the respective JWPepper pages included for ordering information)

Jazz I Program, directed by Dr. Roosevelt Griffin

* [Manteca by Dizzy Gillespie / arr. Steve Owen](#)

* [Bringin’ Down the House by Larry Neeck](#)

[Perfect Storm by Larry Barton](#)

Jazz II Program, directed by George Andrikokus

* [Watermelon Man by Herbie Hancock / arr. Mike Kamuf](#)

[Fat Cat by Doug Beach](#)

[Orinoco Cocoa by Vince Gassi](#)

*Selections for auditions

*****Students are expected to play any included solos*****

Good luck to you and your students and enjoy your summer!

Sincerely,

Bryan Itzkowitz
Holmes Middle School, Wheeling
bryan.itzkowitz@ccsd21.org

NEW THIS YEAR!

Please consider joining us at one of our
District 7 Junior Jazz Summer Workshops!

More details will be available soon, but please check the ILMEA
website for more details.

Sonnymoon for Two (Part 1 - melody)

Sonny Rollins

Musical score for "Sonnymoon for Two (Part 1 - melody)" by Sonny Rollins. The score is written in bass clef, 4/4 time, and B-flat major. It consists of three staves of music. The first staff starts with a B \flat 7 chord. The second staff starts with an E \flat 7 chord and has a B \flat 7 chord above the second measure. The third staff starts with a C m 7 chord, has an F7 chord above the second measure, a B \flat 7 chord above the third measure, and an F7 chord above the fourth measure. The piece ends with a double bar line and a repeat sign.

Supplemental Material - Sonnymoon For Two

Sample Piano Voicings

Basic 3-note voicings

Rootless voicings

B^b7			E^b7			F7			B^b7			E^b7			F7		
3	b7	1	b7	3	1	b7	3	1	9	b7	3	13	3	b7	5	3	b7

Useful Scales

B^b Blues Scale

1 b3 4 b5 5 b7 1

Sample Bass Line

B^b7																	
E^b7						B^b7											
C^{MIN}7						F7			B^b7			F7					

BRINGIN' DOWN THE HOUSE

BASS

BRIGHT SWING $\text{♩} = 160$

COMPOSED AND ARRANGED BY LARRY NEECK

032-4265-00

The image shows a bass line for the song 'Bringin' Down the House'. It consists of ten staves of music in 4/4 time, with a key signature of two flats (Bb and Eb). The tempo is marked as 'BRIGHT SWING' with a quarter note equal to 160 beats per minute. The notation includes various chords and melodic lines. Chords are written above the staff, and some are boxed with measure numbers. The first staff has chords Eb6, E07, Bb/F, and G+7. The second staff has Cmin7, F9, Bb6, F13, and a boxed 9 Bb6. The third staff has Eb9 and a boxed 17 Bb6. The fourth staff has Bb6, Cmin7, C#07, Bb2, Ab7, G+7, Cmin9, and C#07. The fifth staff has Bb6, Eb6, E07, F13, a boxed 25 Bb6, and Bb6. The sixth staff has Eb9 and a boxed 33 Bb6. The seventh staff has Bb6, Cmin7, C#07, Bb2, Ab7, G+7, Cmin9, and C#07. The eighth staff has Bb6, Eb6, E07, F13, a boxed 41 Bb9, A9, Bb9, A9, Eb6, E07, Bb6/F, and Bb6. The ninth staff has Bb6, Eb9, D9, Eb9, D9, Eb9, E07, Bb6, and Bb6. The notation includes various rhythmic values, accidentals, and dynamic markings like 'mf'.

BASS PG. 2

49 F13 E13 F13 E13 Eb6 E07 F7 Bb6 Db13 C13 B13

OPEN FOR SOLOS - BACKGROUNDS ON CLUE

55 Bb13 Eb9

Bb13 F9 Bb6 Bb6/D Eb6 C9/E F13

1. AS NEEDED

Bb6 Bb6/D Eb6 C9/E F13

2. LAST TIME

67 Bb9 A9 Bb9 A9 Eb6 E07 Bb6/F

Bb6 Bb6 Eb9 D9 Eb9 D9 Eb9 E07 Bb6

75 F13 E13 F13 E13 Eb6 E07 F7 Bb6

79 Eb6 E07 Bb6/F G+7 CMIN7 F6 Bb6

87 Eb6 E07 Bb6/F G+7 CMIN7

95 Eb6 E07 Bb6/F G+7

CMIN7 F9 Bb6 Eb9

BASS

MANTECA

COMPOSED BY DIZZY GILLESPIE AND WALTER FULLER

ARRANGED BY STEVE OWEN

LATIN $\text{♩} = 176$



5

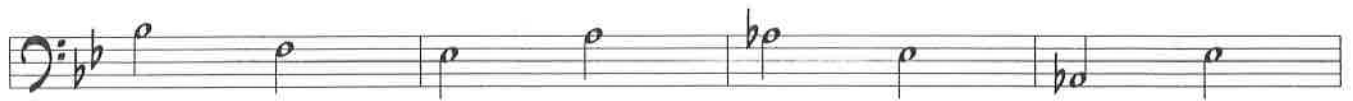
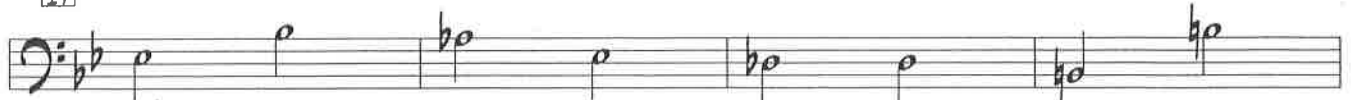
4X's



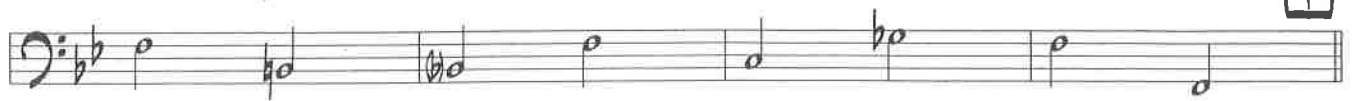
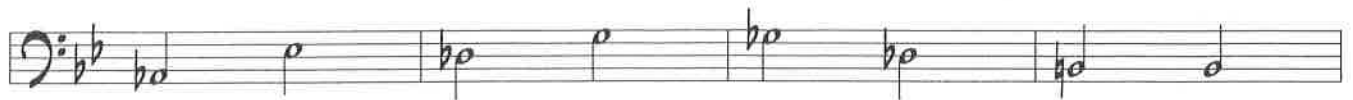
9



17



25



(MANTECA - BASS - PAGE 2)

33 **m^f** 33 34 35 36

37 38 39 40

41 **p** 41 42 **m^f** 43 44

45 **f** 45 46 47 48

49 **1ST X ONLY BASS + DRUMS ONLY 2ND X** **f** - **mp** 49 50 51 52

53 54 55 56 57 **p**

61 **4X's** **f** 61 62 63 64 65

66 67 68 69 70 1. 2 3. 4 **(D.S. AL CODA)**

CODA **OPEN PERCUSSION SOLO** 73 **4X's ON CUE** **m^f** 71 72 73 **m^f** 74 75 76

77 **f** 77 78 79 80 81 82

WATERMELON MAN

BASS

By HERBIE HANCOCK
Arranged by MIKE KAMUF

JAZZ ROCK ♩ = 120

G^bmas7/A^b

A^b9

G⁹

G^b9

8

24

32 *Gmi7/C* 33 *Fmi7/Bb* 34 *Gmi7/C* 35 *Fmi7/Bb*

36 *Gmi7/C* 37 *Fmi7/Bb* 38 *Gbmaj7/Ab* 39 *Ab9* *G9* *Gb9*

40 *F9* 41 42 *E9* *F9* 43

44 *mf* 45 46 47

48 *Gmi7/C* 49 *Fmi7/Bb* 50 *Gmi7/C* 51 *Fmi7/Bb*

52 *Gmi7/C* 53 *Fmi7/Bb* 54 *Gbmaj7/Ab* 55 *Ab9* *G9* *Gb9*

56 57 58 59

60 61 62 63

64 *Gmi7/C* 65 *Fmi7/Bb* 66 *Gmi7/C* 67 *Fmi7/Bb*

OPT. REPEAT FOR MORE SOLOS

Chords: $Gm7/C$, $Fm7/Bb$, G^b_{MA7}/Ab , A^b9 , G^9 , G^b9

72

PLAY IF NO BARI SAX!

Chords: A^b9 , G^9 , G^b9

90

Chords: $Gm7/C$, $F\#m7/B$, $Fm7/Bb$, $Fm7/Bb$, $F\#m7/B$

Chords: $Gm7/C$, $F\#m7/B$, $Fm7/Bb$, $Fm7/Bb$, $F\#m7/B$, $Gm7/C$, $F\#m7/B$, $Fm7/Bb$

Chords: G^b_{MA7}/Ab , A^b9 , G^9 , G^b9